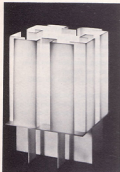


CONTRACT

THE BUSINESS MAGAZINE OF COMMERCIAL FURNISHINGS AND INTERIOR ARCHITECTURE • JULY 1978

Theatrical
lighting
discipline

Display inspires store design
Art programs in contract



Left: Labirinto, a table/desk lamp custom designed by Maurizio Rossi for Luminescence Ltd., is constructed of acrylic plastic. The intricately designed lamp is 15 inches high and ten inches in diameter. Custom designed lamps range in size from the small to the monumental. Luminescence Ltd., Circle No. 282.

Right: Contemporary floor lamp from Keystone Lamp has white shade that is 15 1/2 inches in diameter. Trim and accents are of polished chrome. Twin sockets and an on-off foot switch are other features of this attractively modern, 53-inch high lamp. Keystone Lamp, Circle No. 283.



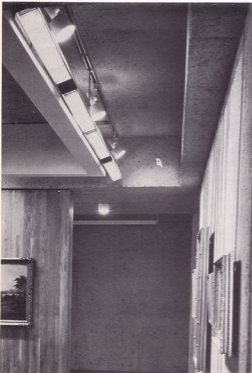
Right: This massive fixture of solid crystal rods is by Camer Glass, Inc.

The top as well as the bottom is completely enclosed, so that it looks finished from every angle, making it ideal where the fixture is visible from a gallery of the top landing of a stairwell. Made in Italy, it is available in different sizes and colors.

Camer Glass, Inc., Circle No. 284.



Below: Fluorescent wall washers along with the Prescolite Lite-Trac System were selected for installation in the Oakland Museum-Art Gallery. The system features adjustable, directional lighting mounted on a three-wire track. Prescolite, Circle No. 285.



Right: The Robert Long 5313 pendant, distributed by Metropolitan Furniture Corp., has a 12-inch diameter, hand-blown crystal sphere and a single high intensity lamp. Finishes available are pewter, oil rubbed bronze, oil rubbed brass, black, and rusted iron. Metropolitan Furniture Corp., Circle No. 286

Below: Wall Lantern from Georgian Art Lighting Designs is completely crafted of 1/4-inch thick, acrylic panels. In white with black trim, it accommodates up to a 100-watt lamp in a medium base porcelain, copper shell socket. Georgian Art Lighting Designs, Inc., Circle No. 287.

